



# ALMA KAPPA

## Offshore Support Vessel



### CLASSIFICATION / FLAG

Built	2008
Flag	French (RIF)
IMO	9467500
Classification	Bureau Veritas I  Hull  Mach
Service notation	Tug
Navigation notation	Unrestricted navigation
Call sign	FMNC
MMSI	228 396 600
Port of registry	Marseille

### PRINCIPAL DIMENSIONS

Length o.a	37.00 m
Breadth o.a	11.40 m
Moulded draft	4.05 m
Air draft	21.00 m
Max. displacement	882 tons
Deadweight	325 tons
GRT	476
NRT	143
Total clear deck space	120 m <sup>2</sup>

### COMMUNICATIONS

Internet access	Wifi network GSM 4G/5G
Satellite phone	Iridium (optional)

### DECK EQUIPMENT

Deck crane	1 x Heila Knuckle boom crane - SWL 5 t
Towing winch	1 x Double drum 50 t (Waterfall)
Tugger winch	1 x 20 t (on portside)
Towing pins	1 x 100 t set
Shark jaws	1 x 100 t set
Stern roller	1 x 120 t
Towing hook	1 x 45 t w/ quick release

### MACHINERY / PROPULSION

Maximum speed	12.5 knots - 8 m <sup>3</sup> /day
Economic speed	10 knots - 6 m <sup>3</sup> /day
Guard duty	> 1 m <sup>3</sup> /day
Main engines	2 x 1007 kW Cummins KTA 38
Auxiliary engines	2 x 150 kW x Cummins 6CTA8.3
Harbour generator	1 x 80 kW Cummins 68T5.9
Propulsion	2 x fixed pitch propellers in nozzles
Bow thruster	1 x 261 kW Cummins NTA855-M350
Bollard pull	35 tons

### TANK CAPACITIES

Total fuel	320 m <sup>3</sup>
Ship's fuel	121 m <sup>3</sup>
Autonomy	#45 days while carrying out offshore works
Cargo fuel	199 m <sup>3</sup>
Cargo fuel pumping rate	62 m <sup>3</sup> /h
Fresh water	75 m <sup>3</sup>
Fresh water maker	Yes

### ACCOMMODATION

Bunks	12
<i>incl. single cabins</i>	2
<i>incl. double cabins</i>	5
<i>Maximum POB</i>	12
<i>Maximum POB for day trip</i>	18 (incl. 12 passengers)
Desks for clients' use	2 (navigation bridge and owner cabin)
Electrical connections	EU & UK sockets

### SAFETY EQUIPMENT

Fire fighting system	CO <sub>2</sub> in Engine Room
Medical chest	Dotation B
Life rafts	2 x 12 persons + 1 x 6 persons
Rescue boat	1 x 6 persons w/ rigid hull and 25HP engine



# ALMA KAPPA

## Offshore Support Vessel

### TOWING AND ANCHOR HANDLING LINES

Towing rope	<b>High Tenacity polyester fiber (eye termination)</b>
<i>length</i>	<b>220 m</b>
<i>diameter</i>	<b>72 mm</b>
<i>breaking load</i>	<b>90 metric tons</b>
Towing wire	<b>Steel wire rope IWRC on upper drum w/ closed spelter socket termination</b>
<i>length</i>	<b>750 m</b>
<i>diameter</i>	<b>40 mm</b>
<i>breaking load</i>	<b>1117 kN</b>
Anchor handling wire	<b>Steel wire rope IWRC on lower drum w/ closed spelter socket termination</b>
<i>length</i>	<b>250 m</b>
<i>diameter</i>	<b>44 mm</b>
<i>breaking load</i>	<b>1350 kN</b>
Pennant wire	<b>1 x 15 m steel wire rope w/ K2 thimble VEDER-LOK termination</b>
Maximum breaking load	<b>92 metric tons</b>

### PROPULSION PARTICULARS

Full ahead/astern	<b>1900 rpm</b> (rotations per minute)
Half ahead/astern	<b>1612.5 rpm</b>
Slow ahead/astern	<b>1325 rpm</b>
Dead slow ahead/astern	<b>650 rpm</b>

### STEERING PARTICULARS

Type of rudder	<b>2 x Semi-balanced</b>
Maximum rudder angle	<b>35°</b>
Hard to ps to stbd	<b>23 s</b>

### FENDERS AND MOORING ROPES

Fenders (Qty / type)	<b>1 fender at bow and alongside the hull D-fender on both sides 2 x Pneumatic fenders with tire net "Yokohama" - d 1200 mm x L 2000 mm 2 x Pneumatic fenders with tire net "Yokohama" - d 1000 mm x L 1500 mm</b>
Mooring ropes	<b>Synthetic ropes with eye termination 1 x length 35 m / diameter 80 mm 2 x length 18 m / diameter 50 mm 1 x length 60 m / diameter 50 mm 1 x length 35 m / diameter 50 mm</b>

### ANCHOR CHAINS

Number of shackles port	<b>8</b>
Number of shackles starboard	<b>8</b>
Max. rate of heaving	<b>4 min/ Shackle</b>

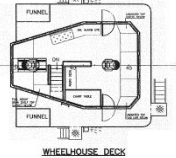
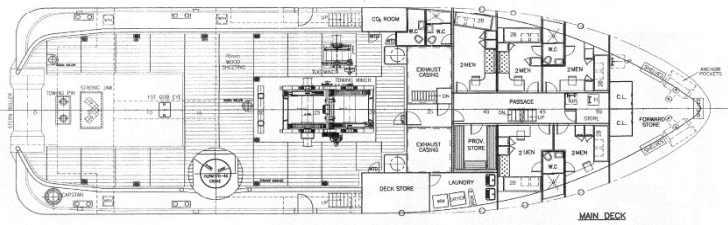
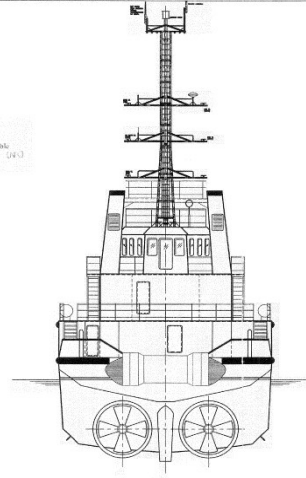
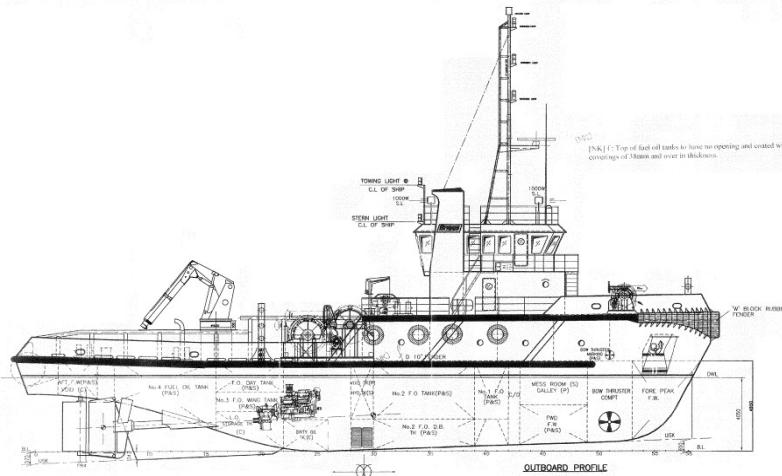
### MISCELLANEOUS

Heat and air conditioning system	
Sewage treatment plant	
Reefer container plug	<b>1 / Maximum power 12 kW / 380 V</b>
Lashing points	<b>Main deck fitted with many lashing points</b>



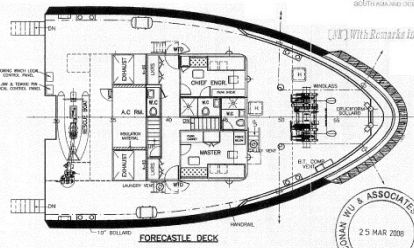
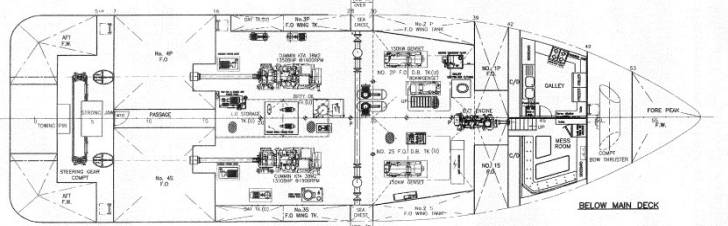
# ALMA KAPPA

## Offshore Support Vessel



**PRINCIPAL PARTICULARS**

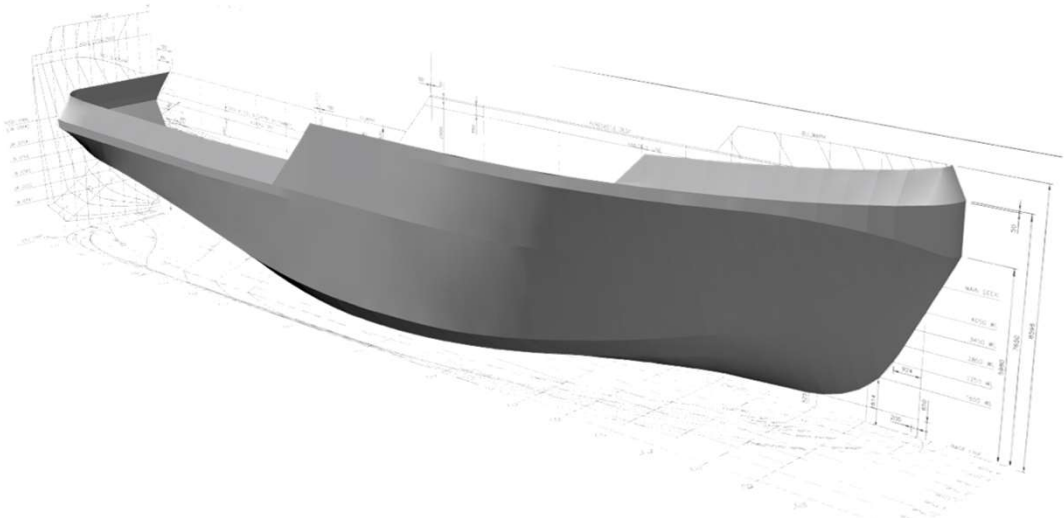
LENGTH O.A.	37.00 m
LENGTH B.P.	32.60 m
LENGTH W.L.	36.00 m
BEAM MLD.	11.40 m
DEPTH MLD.	4.95 m
DRAFT DESIGNED	4.05 m
FRESH WATER	80 m <sup>3</sup> (approx.)
FUEL OIL	280 m <sup>3</sup> (approx.)
COMPLEMENT	12 MEN



25/03/08	AS FITTED		C	1980
DATE	MODIFICATION		REV	BY
<b>37m ANCHOR HANDLING TUG</b>				
<b>GENERAL ARRANGEMENT</b>				
OWNER				YARD NO.
BUILDER	SHAN YANG SHIPYARD SHEN ZHEN			259
CLASS	RINA			
<b>CONAN WU &amp; ASSOCIATES</b>				
MARINE ARCHITECTS				
MEMBER SOCIETY OF MARINE ARCHITECTS (S.M.A.) - CHINA SOCIETY OF SHIP DESIGN (C.S.S.D.)				
No. 200 ZHONGYUAN ROAD, 200180 SHANGHAI, CHINA TEL: 8621 5880 0123 FAX: 8621 5880 0124				
DRAWN	CHECKED	APPROVED	SCALE	DRAWING NO.
CW			1:100	C3320G/G-1 C



Complete 3D structural model is available for client equipment integration







# ALMA KAPPA

## Offshore Support Vessel

