



ALMA KAPPA

Offshore Support Vessel



CLASSIFICATION / FLAG

Built	2008
Flag	French (RIF)
IMO	9467500
Classification	Bureau Veritas I  Hull  Mach
Service notation	Tug
Navigation notation	Unrestricted navigation
Call sign	FMNC
MMSI	228 396 600
Port of registry	Marseille

PRINCIPAL DIMENSIONS

Length o.a	37.00 m
Breadth o.a	11.40 m
Moulded draft	4.05 m
Air draft	21.00 m
Max. displacement	882 tons
Deadweight	325 tons
GRT	476
NRT	143
Total clear deck space	120 m ²

COMMUNICATIONS

Internet access	Wifi network GSM 4G/5G
Satellite phone	Iridium (optional)

DECK EQUIPMENT

Deck crane	1 x Heila Knuckle boom crane - SWL 5 t
Towing winch	1 x Double drum 50 t (Waterfall)
Tugger winch	1 x 20 t (on portside)
Towing pins	1 x 100 t set
Shark jaws	1 x 100 t set
Stern roller	1 x 120 t
Towing hook	1 x 45 t w/ quick release

MACHINERY / PROPULSION

Maximum speed	12.5 knots - 8 m ³ /day
Economic speed	10 knots - 6 m ³ /day
Guard duty	> 1 m ³ /day
Main engines	2 x 1007 kW Cummins KTA 38
Auxiliary engines	2 x 150 kW x Cummins 6CTA8.3
Harbour generator	1 x 80 kW Cummins 68T5.9
Propulsion	2 x fixed pitch propellers in nozzles
Bow thruster	1 x 261 kW Cummins NTA855-M350
Bollard pull	35 tons

TANK CAPACITIES

Total fuel	320 m ³
Ship's fuel	121 m ³
Autonomy	#45 days while carrying out offshore works
Cargo fuel	199 m ³
Cargo fuel pumping rate	62 m ³ /h
Fresh water	75 m ³
Fresh water maker	Yes

ACCOMMODATION

Bunks	12
<i>incl. single cabins</i>	2
<i>incl. double cabins</i>	5
<i>Maximum POB</i>	12
<i>Maximum POB for day trip</i>	18 (incl. 12 passengers)
Desks for clients' use	2 (navigation bridge and owner cabin)
Electrical connections	EU & UK sockets

SAFETY EQUIPMENT

Fire fighting system	CO ₂ in Engine Room
Medical chest	Dotation B
Life rafts	2 x 12 persons + 1 x 6 persons
Rescue boat	1 x 6 persons w/ rigid hull and 25HP engine



ALMA KAPPA

Offshore Support Vessel

TOWING AND ANCHOR HANDLING LINES

Towing rope	High Tenacity polyester fiber (eye termination)
<i>length</i>	220 m
<i>diameter</i>	72 mm
<i>breaking load</i>	90 metric tons
Towing wire	Steel wire rope IWRC on upper drum w/ closed spelter socket termination
<i>length</i>	750 m
<i>diameter</i>	40 mm
<i>breaking load</i>	1117 kN
Anchor handling wire	Steel wire rope IWRC on lower drum w/ closed spelter socket termination
<i>length</i>	250 m
<i>diameter</i>	44 mm
<i>breaking load</i>	1350 kN
Pennant wire	1 x 15 m steel wire rope w/ K2 thimble VEDER-LOK termination
Maximum breaking load	92 metric tons

PROPULSION PARTICULARS

Full ahead/astern	1900 rpm (rotations per minute)
Half ahead/astern	1612.5 rpm
Slow ahead/astern	1325 rpm
Dead slow ahead/astern	650 rpm

STEERING PARTICULARS

Type of rudder	2 x Semi-balanced
Maximum rudder angle	35°
Hard to ps to stbd	23 s

FENDERS AND MOORING ROPES

Fenders (Qty / type)	1 fender at bow and alongside the hull D-fender on both sides 2 x Pneumatic fenders with tire net "Yokohama" - d 1200 mm x L 2000 mm 2 x Pneumatic fenders with tire net "Yokohama" - d 1000 mm x L 1500 mm
Mooring ropes	Synthetic ropes with eye termination 1 x length 35 m / diameter 80 mm 2 x length 18 m / diameter 50 mm 1 x length 60 m / diameter 50 mm 1 x length 35 m / diameter 50 mm

ANCHOR CHAINS

Number of shackles port	8
Number of shackles starboard	8
Max. rate of heaving	4 min/ Shackle

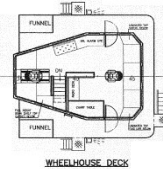
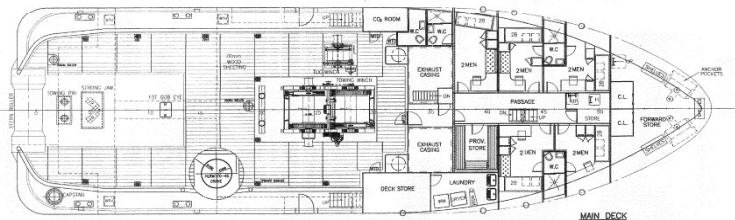
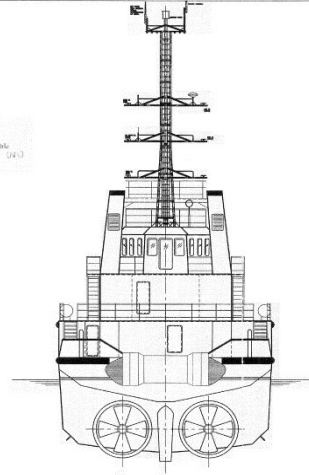
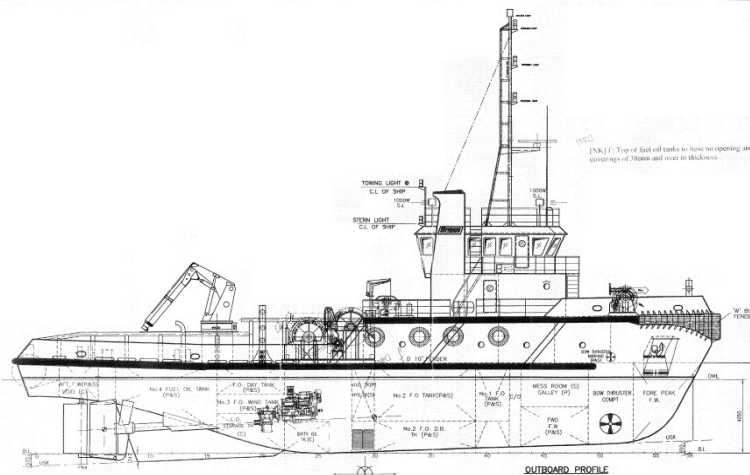
MISCELLANEOUS

Heat and air conditioning system	
Sewage treatment plant	
Reefer container plug	1 / Maximum power 12 kW / 380 V
Lashing points	Main deck fitted with many lashing points



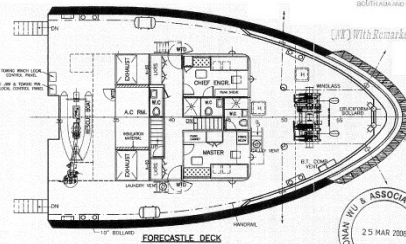
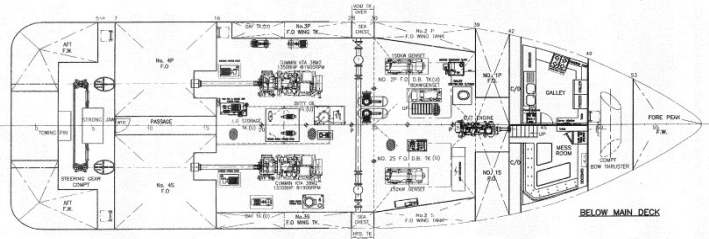
ALMA KAPPA

Offshore Support Vessel



PRINCIPAL PARTICULARS

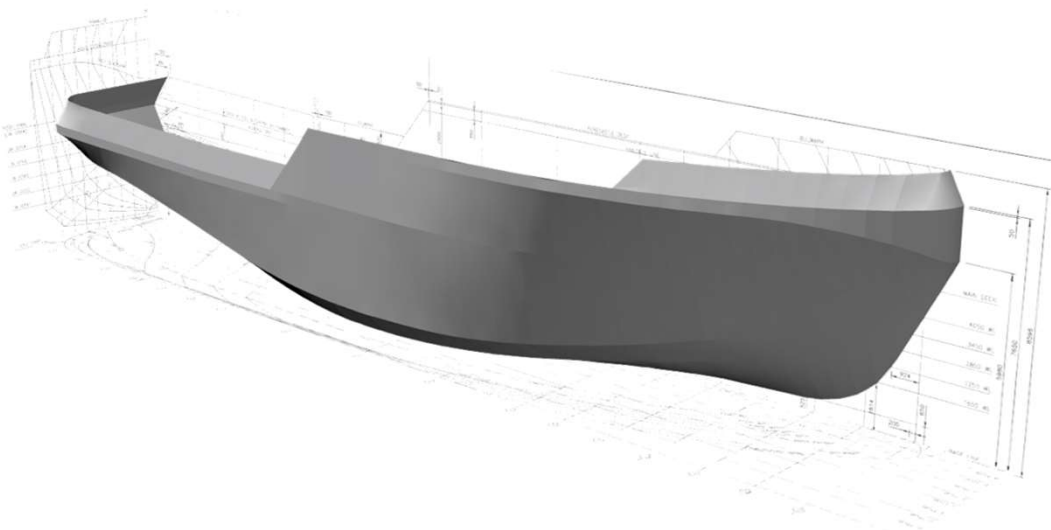
LENGTH O.A.	37.00 m
LENGTH B.P.	32.60 m
LENGTH W.L.	36.00 m
BEAM MLD.	11.40 m
DEPTH MLD.	4.95 m
DRAFT DESIGNED	4.05 m
FRESH WATER	80 m³ (approx.)
FUEL OIL	280 m³ (approx.)
COMPLEMENT	12 MEN



25.03.08	AS BUILT	MODIFICATION	C 1985
SHIP:	37m ANCHOR HANDLING TUG		
TITLE:	GENERAL ARRANGEMENT		
OWNER:	SHAN YANG SHIPYARD SHEN SHI	YARD NO.	259
DESIGNER:	CONAN WU & ASSOCIATES		
ARCHITECTS:	NAVAL		
SCALE:	1:150	C3320G/G-1	C



Complete 3D structural model is available for client equipment integration





ALMA KAPPA

Offshore Support Vessel

